

## Current Transformers

- Applicable Standard: IEC / EN 60044-1, BS 3938, IS 2705-1
- Type: Wound Primary, Busbar Type, Tape Wound, Protection Type, Split Core.
- Accuracy Class: 0.2, 0.2S for laboratory and power measurement.  
0.5, 0.5S for accurate measuring, kWh  
1 for general measurement  
3 for Indicating Instruments
- System Voltage: 720V maximum
- Rated Primary Rating: 1A to 7500A
- Rated secondary output: 5A standard (1A on request)
- Cost effective molded case - current transformer.
- Various mounting options.
- Wire sealable terminal covers.
- Glass filled polycarbonate housing (UL 94 V-0)
- Supplied with accredited test certificates



RISH Xmer Wound Primary Current Transformers Series



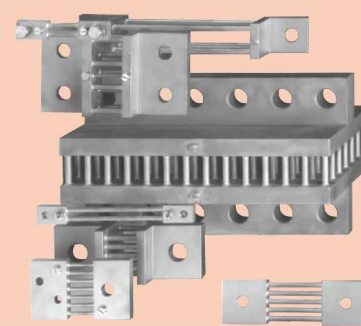
RISH TW Series



RISH Xmer Current Transformers Series

## Shunts

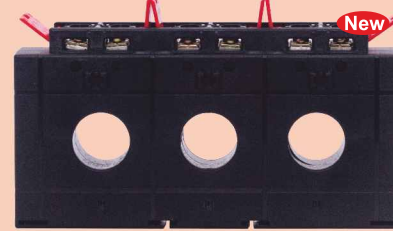
- Available from 1A to 15000A
- Available in Voltage Drop: 50mV/60mV/75mV/150mV
- Accuracy class: 0.5 or 1 as per IEC51



Shunts



RISH Xmer Split Core



3 Phase CTs

## Cam Switches



- Instrumentation, changover, Multistep & Isolator Switches are available.
- Current Rating : 6A, 10A, 16A, 25A, 32A, 40A, 63A, 100A & 200A
- Long Mechanical life.
- Successfully type tested from ERDA

## Earth Tester



Earth Tester

- Self contained instrument powered by built in hand operated generator
- Four terminals (Spike) method is incorporated for measuring resistivity of soil
- Direct reading of earth resistance in  $\Omega$
- Rugged and sturdy instruments suitable for field application
- Sintered anti-friction bearing provide smooth and maintenance free operation.
- Confirms to IS 9223-1989
- 90mm Logarithmic scale
- Earth resistance measurement range upto 10000  $\Omega$

## Relays



Rish Relay-A



Rish Relay-V



Rish Relay - V/Hz



Rish ELR

- Trip relay cum DPM having 4 digit 7 segment LED display
- True RMS measurement
- Dual Color LED for fault indication
- Stores last 15 fault
- Configuration via USB based PRKAB
- User selectable password protection
- Universal wide range Auxiliary supply
- Pre alarm function

## Digital Multimeters



RISHABH DMM 612/13/15/16



RISHABH DMM 410



RISHABH 6012/13/15/16 60K series Multimeter



USB Cable

- Automatic terminal blocking system ABS
- PC interface with RISH COM 100 Software
- TRMS Measurement
- MIN MAX value storage
- Protective holster for rough duty
- Continuity Test
- Power economizing circuit
- Auto ranging manual range selection
- Backlit
- Supplied with accredited test certificates
- 3 years warrantee
- CAT IV (600V) / CAT III -(1000V)
- Data Logging via RS232

- 60,000 counts True RMS measurement with high crest factors
- Data Logging upto 32000 readings with Real time stamp
- Plug and play USB connectivity with PC
- 100kHz bandwidth for voltage measurement
- 1kHz Low pass filter mode for VFD Applications
- Square wave output with selectable duty cycle & frequency
- Selectable clamp ratio for current measurement upto 6000A
- External Power adapter for uninterrupted measurements
- Temperature measurement with J,K,Pt100 & Pt1000 sensors
- Fully programmable GO-NO-GO

## Digital Clamp Meters

- Unique design patented by RISHABH
- Large jaw opening with 180° rotation to avoid difficult measuring positions
- Narrow housing for firm grip and easy to carry
- High accuracy for low current measurement
- Null zero correction for resistance and capacitance
- Analog scale and auto power OFF



Clamp 1000A/1A  
Clamp 1000A/5A  
Clamp 300A/0.3A

Rish Clamp 1000A AC  
300A AC/DC  
ES 400A AC

Rish Clamp 1000A AC  
1000A AC/DC  
ES 1000A AC

Back Trigger

Rotating Jaw

Rish Clamp Power Meter  
1000A/400A AC/DC

- AC & DC Voltage upto 1000V
- AC & DC Current upto 1000A/400 A
- Inrush/Peak Value Measurement
- Three Phase Active, Reactive and Apparent Power Measurement without any manual calculation
- Horse Power Measurement, Energy Measurement
- Measure upto 49th Harmonics and THD as well
- Phase Angle, Power Factor, Crest Factor, DF
- LPF Mode for VFD Application

## Insulation Tester



LV Insulation

HV Insulation

LV Insulation with ABS Body

Insu 10

Insu 20

Mx30

- Robust units : Ideal for portable testing
- Test voltages from 100V to 5000V & Insulation Resistance measurement upto 1T Ohm : To cater wide applications
- DC/AC voltage measurements to 2000V : To check live voltages if any present in DUT
- Comparator Function: Pass/fail (Go-No-Go) test for the insulation measurements
- Complies to International standards



Rish Insu 5000



Product upgradation is a continuous process. Hence, data in this catalog is subject to change without prior notice. For the latest information, please get in touch with our Sales Offices.

# Inventing Tomorrow

Product Range Catalogue

rishabh.co.in



Rev: Panorama / Catalogue / 15 / 00



Power Supplies

Elite Class



General purpose power supply **New**



- Competitive price & performance ratio
- Three protection modes;
  - Hiccup mode
  - Continuous Mode
  - Manual Reset
- Protections: Short circuit, Overload, Over-voltage
- Available in 1-Phase, 2-Phase and 3-Phase
- Declared ambient temperature field i.e 40°, 50° & 60°C
- Compliance to EN60204-1 & Ingress Protection according to EN 60529
- Din Rail Mounting
- Compact Size
- Available in output ratings of 5, 12, 24 & 48 V with current from 1A to 40A
- Efficiency: ≥91%



Note - Available only for : Middle East, Africa & Asia

PST2430B (3 Phase)

PST2440B (3 Phase)

Multi - Function Meters



Rish Optima VAF



Rish Delta Power



Rish Delta Energy



PQM

- Harmonics measurement up to 56 th
- Measure Current is Neutral line
- Tetra quadrant energy measurement
- LCD Touch screen user interface
- Panel Mount



Rish Master 3428



Rish Master 3430



Rish Master 3440



Rish Master 3480



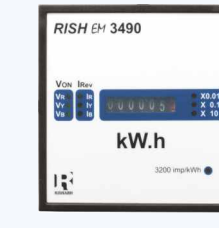
RISH EM 1340



Rish Master 3490SS



Rish Master 3490DS



Rish Master 3490



DC Energy Meter RISH EM DC



RISH EM 2340DS

- Wide Input (100-500 V LL programmable)
- Universal aux supply (60-300V AC DC)
- Click fit arrangement
- Measure electrical parameters including V,I,H,z,kW,kVAR,THD
- Four function keys enable instant access to the desired parameter screen among others
- Optional outputs: Analog, Pulse and RS 485



Isolators



Universal Transmitter RISH Ducer V604



Signal Isolator RISH SI 101/102



Programmable Signal Isolator Rish PI 102



Isolating Amplifier RISH Ducer TV808



Temperature Transmitter RISH Ducer PT602



Tap Position Transducer Rish CON TPT

- Measuring ranges configurable with DIP switch and potentiometer
- LED Indicator
- Universal (AC/DC) power supply
- Accuracy class 0.2



Transducer



Power Transducer RISH Con P



Current / Voltage Transducer RISH Con I/Rish Con V



Frequency Transducer RISH Con Hz



Multifunction Transducer Rish Con M



Current / Voltage Transducer Rish Con CA / CV (Dual Output)



Voltage/Current Transducer Rish Con CV/CA (Single Output)



Multifunction Transducer M20/M24 / M40/ M30/M42/M01/M00



Current / Voltage Transducer RISH Ducer E15



Digital Panel Meters



Programmable AC RISH EINE



Programmable DC RISH EINE



R Series DPM



3 1/2 digit DC Ammeter / Volt Meter (24x96)



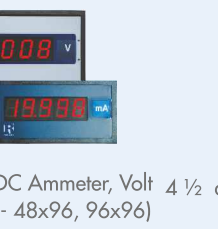
4 digit Power DPM (Size - 96x96)



4 digit Power Factor DPM (Size - 96x96)



3 1/2 digit Temperature DPM



4 1/2 digit DC Ammeter, Volt Meter (Size - 48x96, 96x96)



4 1/2 digit, 1" display DC Ammeter / Volt Meter (72x144)



4 digit fully programmable AC Ammeter, Volt Meter (size-48x96, 96x96)

- Available type: AC, DC, Current and Voltage, frequency, temperature
- 1ph, 3ph programmable DPM
- Universal aux. supply
- Enclosure protection for dust & water
- TRMS Measurement
- 3 1/2, 4, 4 1/2 Digit ultra bright LED display
- Available in 5 different sizes - 24x48, 24x96, 96x96, 72x144, 48x96



Energy Management System

